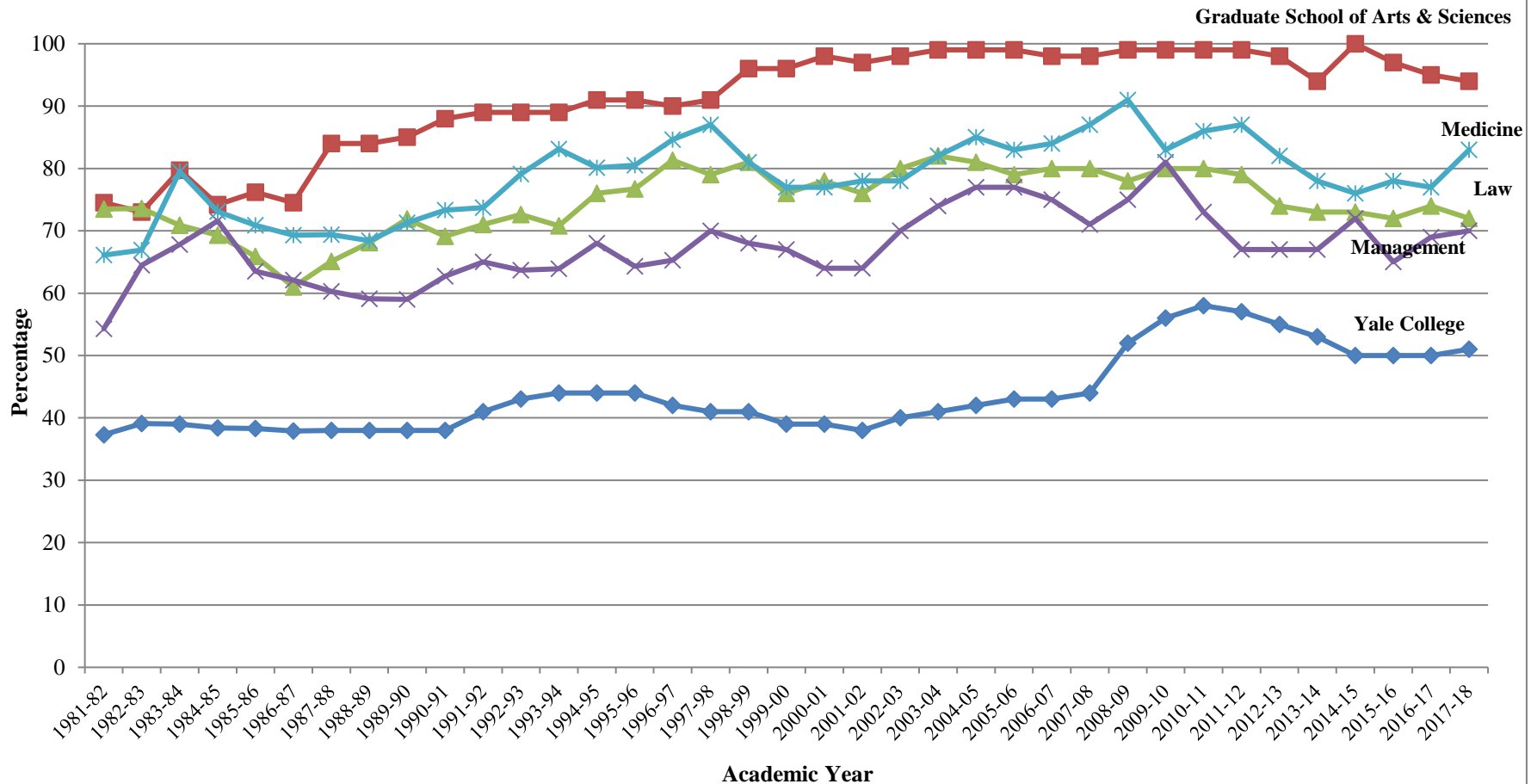


Yale University Percentage of Students Receiving Financial Aid (a) 1981-82 through 2017-18



Notes:

(a) The Graduate School of Arts and Sciences includes both Ph.D. and master's degree students. Effective 1998-99, the Graduate school adopted a policy of providing full support for the first four years of study to all Ph.D. candidates.

Source:

Yale University Office of Institutional Research

W086_FA_Percent_Fig

Last updated on (05/2019)